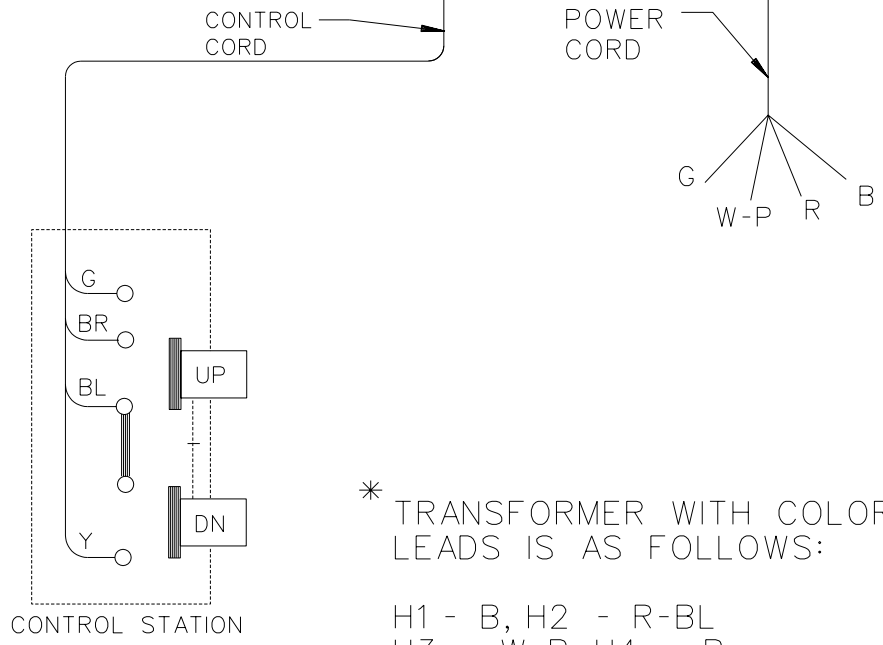


TO CONVERT WIRING FROM 440-480/3/60 OR 380-415/3/50 TO 208-240/3/60 OR 190-220/3/50 OPERATION ON CONVERSION TERMINAL BOARD: MOVE EACH OF THE 6 LEADS AND THE 2 DOUBLE LEADS FROM ITS LUG IN THE ROW MARKED HIGH VOLTS TO THE IDENTICALLY COLORED LUG IN THE ROW MARKED LOW VOLTS. ALL CONNECTIONS MUST BE IN THE SAME ROW.

- B=BLACK
 - R=RED
 - W=WHITE
 - G=GREEN
 - BL=BLUE
 - BR=BROWN
 - Y=YELLOW
 - T=TAN
 - O=ORANGE
 - P=PURPLE
- ←→ LINE CONNECTOR
 - MECHANICAL INTERLOCK
 - TERMINAL



* TRANSFORMER WITH COLORED LEADS IS AS FOLLOWS:
 H1 - B, H2 - R-BL
 H3 - W-R, H4 - R
 X1 - BL-T, X2 - BL

CM COLUMBUS MCKINNON CORPORATION
 INDUSTRIAL PRODUCTS DIVISION
 140 JOHN JAMES AUDUBON PARKWAY
 AMHERST, NEW YORK 14228-1197

WIRING DIAGRAM
 LODESTAR HOIST
 MODELS J,-JJ, -L, -LL, -R, -RR,
 -RT, & -RRT
 DUAL VOLTAGE 3 PHASE
 TYPE T CONTACTOR

DATE 7-31-03 | B-35177