



Hand Winch Type HA-SW

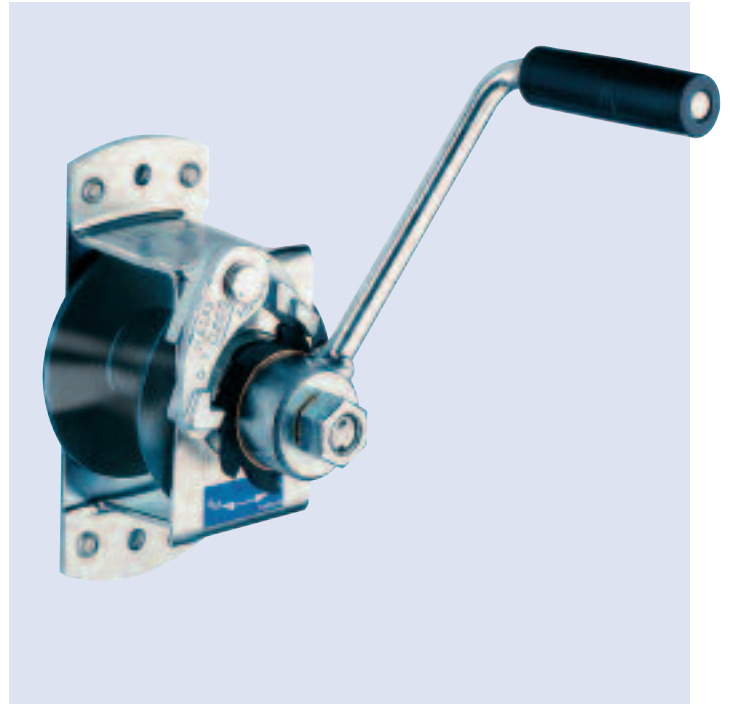


Lifting capacity 80kg - 125kg for wall mounting

- Compact unobtrusive hand winches
- Pressed steel with zinc plating
- Easy, safe operation
- Corrosion resistant
- Rope outlet in any direction
- With integral Siku type brake

Specification

Lifting capacity 1st layer	kg	80	125
Lifting capacity last layer	kg	47	60
Rope diameter	mm	3	4
Rope capacity 1st layer	m	2.1	1.5
Rope capacity total	m	20	15
Number of layers		6	6
Ratio		1:1	1:1
Lift per crank turn	mm	135	135
Required effort	kg	14	14
Weight	kg	2.5	2.5



Hand Winch Type HD-SG



Lifting Capacity 63 – 250 kg for wall mounting

- Solid enclosed aluminium housing
- Silent with an enclosed load pressure brake with automatic re-adjustment
- Winch handle detachable under load
- Rope outlet in any direction

Specification

Lifting capacity 1st layer	kg	63	125	250
Lifting capacity last layer	kg	63	125	140
Duty class to DIN 15020		1Cm	1Cm	1Cm
Rope diameter	mm	3	3	4
Rope capacity 1st layer	m	2	2	1.4
Rope capacity total	m	20	20	15
Number of layers		6	6	6
Ratio		1:1	1:1	2.75:1
Lift per crank turn	mm	135	135	57
Required effort	kg	10	12	16
Weight	kg	3	3	5



Hand Winch Type HA-SGS



Lifting capacity 250 kg or 500 kg for wall mounting

- Removable crank handle which fits either side i.e. front or back - this avoids unintentional operation - useful in non secure areas
- Easily installed on flat surfaces - unobtrusive
- Internal automatic load brake, high security standard with a slack rope inhibitor
- Quiet in operation
- Painted finish
- Complies with BS EN 13157

Specification

Lifting capacity 1st layer	kg	250	500
Lifting capacity last layer	kg	160	300
Rope diameter	mm	5	6.5
Rope capacity 1st layer	m	2.7	2.1
Rope capacity total	m	15	10
Number of layers		6	6
Ratio		5.06:1	9.2:1
Lift per crank turn	mm	47	25
Required effort	kg	12	14
Weight	kg	12	12



Hand Winch Type G-TL



Lifting Capacity 150kg for wall mounting – ideal for raising and lowering basketball nets

- Casing made of blow resistant black ABS plastic material
- Robust and safe with no protruding parts
- Equipped with an internal load reaction friction brake and removable safety crank to avoid unintentional operation
- Painted internal components

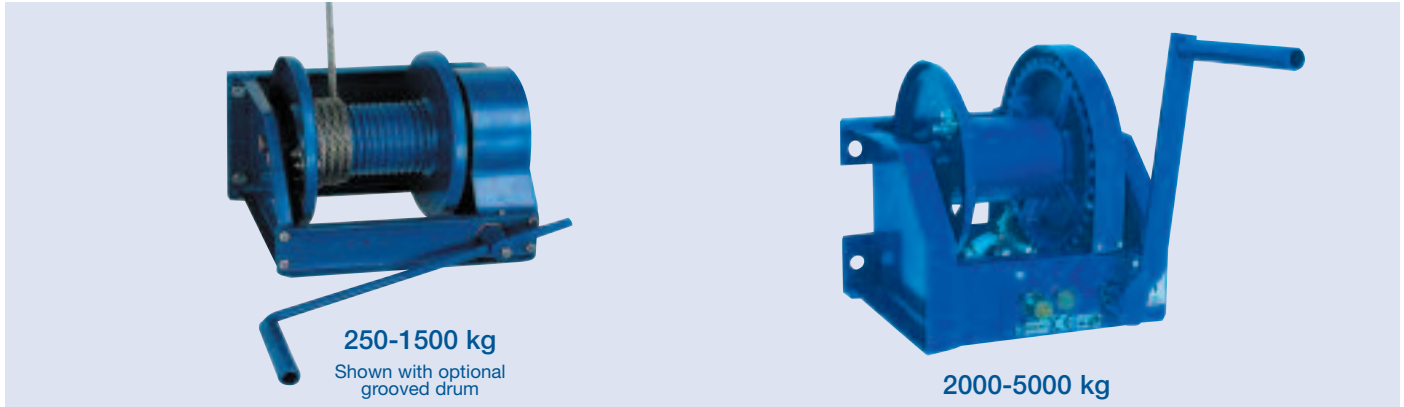
Specification

Lifting capacity 1st layer	kg	150
Lifting capacity last layer	kg	75
Rope diameter	mm	4
Rope capacity 1st layer	m	1.7
Rope capacity total	m	10
Number of layers		5
Ratio		1:1
Lift per crank turn	mm	125
Required effort	kg	8
Weight	kg	6





Hand Winch Type G-WG



Lifting capacity from 250 kg to 5000 kg - for wall mounting

- Worm gear operated winch with machine cut worm wheel and shaft mounted on bearings
- Two speed operation on 2, 3 and 5 tonne models by displacement of the crank
- Fabricated steel frame suitable for wall mounting

Options

- Zinc plated protection
- Multi Compartment Drum
- Grooved Drum
- Pneumatic operation via one of our drive devices

Specification

Lifting capacity 1st layer	kg	250	500	1000	1500	2000	3000	5000
Lifting capacity last layer	kg	95	239	542	845	1129	1861	3165
Rope diameter	mm	5	6	9	10	13	16	20
Rope capacity 1st layer	m	3.1	4.4	5.2	5.4	5.0	5.6	5.3
Rope capacity total	m	67	67	58	50	48	42	42
Number of layers		5	9	7	6	6	5	5
Ratio		10:1	12:1	26:1	26:1	76/38:1	104/52:1	120/60:1
Lift per crank turn	mm	17	20	23	33	11/21	8/16	9/18
Required effort	kg	5	9	14	21	9/18	12/24	25/50
Duty class to DIN 15020		1Em	1Em	1Em	1Em	1Em	1Em	1Em
Weight	kg	13	16	26	28	60	78	115



Hand Winch Type K-WB



Lifting capacity 250 kg to 750 kg for wall mounting

- Worm gear operation in an oil bath to guarantee smooth operation – very popular for theatrical applications
- Enclosed cast iron construction
- Adjustable crank radius for speedy cranking
- Self locking automatic brake ensures load is held securely

- Hardened worm shaft gives long life
- Complies with BS EN 13157

Options:

- Grease lubrication offers different mounting positions
- Grooved drums
- Multi compartment drums

Specification

Lifting capacity 1st layer	kg	250	500	750
Lifting capacity last layer	kg	210	425	624
Rope diameter	mm	5	6	8
Rope capacity 1st layer	m	4.8	7.9	9.2
Rope capacity total	m	11.3	29.1	49
Number of layers		2	3	4
Ratio		16:1	16:1	25:1
Lift per crank turn	mm	20	26	20
Required effort	kg	9.2	14.5	16
Duty class to DIN 15020		1Bm	1Bm	1Bm
Weight	kg	12.5	21	42



Hand Winch Type K-WB

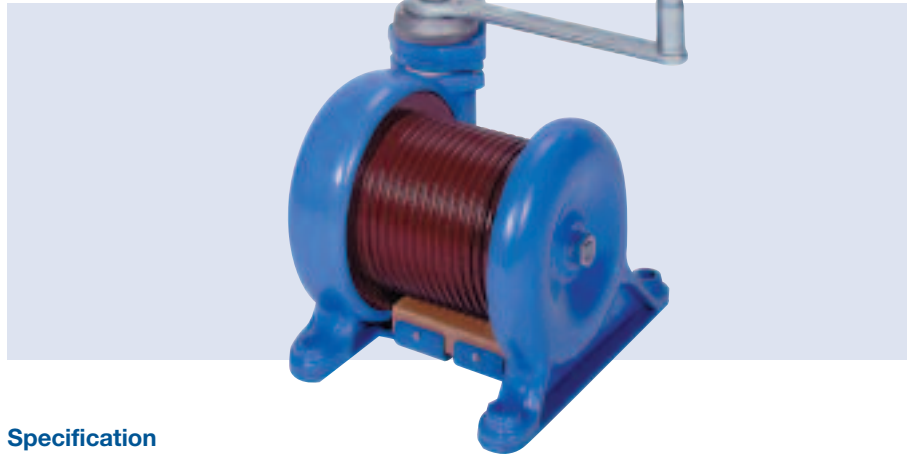
To BGV C1 German Safety Regulation

Lifting capacity 250kg – 600kg for wall mounting

- Specially adapted winches to meet the requirements of German BGV C1 regulation which allows loads to be lifted above people without additional safety wires
- Cast iron construction, the gears run in an oil bath, lubrication is simple, ensuring smooth operation.
- With grooved rope drum, rope is held on one layer only - equipped with rope pressing device to maintain tension
- With two independent brakes each capable of holding the load
- Larger drum diameter than the standard K- WB winch (Page 28)
- Alternate mounting positions are possible with the use of a grease lubrication kit in place of oil lubrication
- Complies with BS EN 13157 and BGV C1 regulation

Options:

- Hand crank with foldable handle
- Multi rope operation



Specification

Lifting capacity 1st layer	kg	250	450	600
Drum diameter	mm	105	125	165
Drum length	mm	98	138	182
Wire rope diameter	mm	6	8	9
Wire rope capacity one layer	m	3.8	5	7.5
Lift per crank turn	mm	20	26	20
Required effort	kg	9.2	14.5	16
Duty class to DIN 15020		1Bm	1Bm	1Bm
Weight	kg	12.5	22	40



Hand Winch Type GO-CS

Lifting capacity 100 kg - 300 kg

- Compact and sturdy self sustaining lifting winches for loads up to 300 kg
- Small and inexpensive
- For base or wall mounting
- Self locking worm gear and protection cover for greater safety
- Quiet in operation; no brake ratchets
- Ideal for regular short moving strokes
- Meets the requirements of BS EN 13157



Specification

Reference		CS100	CS200	CS300	CS100PS
Winch type		Standard	Standard	Standard	Webbing
Lifting capacity 1st layer	kg	100	200	300	170
Lifting capacity last layer	kg	80	100	160	-
Rope diameter	mm	3	3 or 4	4	-
Rope capacity total	m	9	4 or 2	2	-
Capacity- webbing, 1mm thick, 20mm wide	m	-	-	-	4
Drum diameter	mm	27	27	27	27
Numbers of rope layers		8	2 or 4	2 or 4	2 or 4
Gear ratio		7:1	14:1	14:1	7:1
Lift per crank turn	mm	13	7	7	13
Required effort	kg	6	6	6	6
Minimum load for the brake function	kg	10	10	10	10
Number of winches per box		12	12	12	12
Weight	kg	1.8	1.8	1.8	1.8

CS 100 PS is for webbing only



Hand Winch Type GO-AFD



Lifting capacity 190 kg - 1994 kg

- Column or base mounting
- Lightweight, inexpensive
- High efficiency through spur gearing
- Smooth running
- All components are zinc plated
- Automatic load pressure brake that prevents the unintentional lowering of the load
- Enclosed and protected stamped gears
- Available for wire rope or webbing
- Complies with BS EN 13157



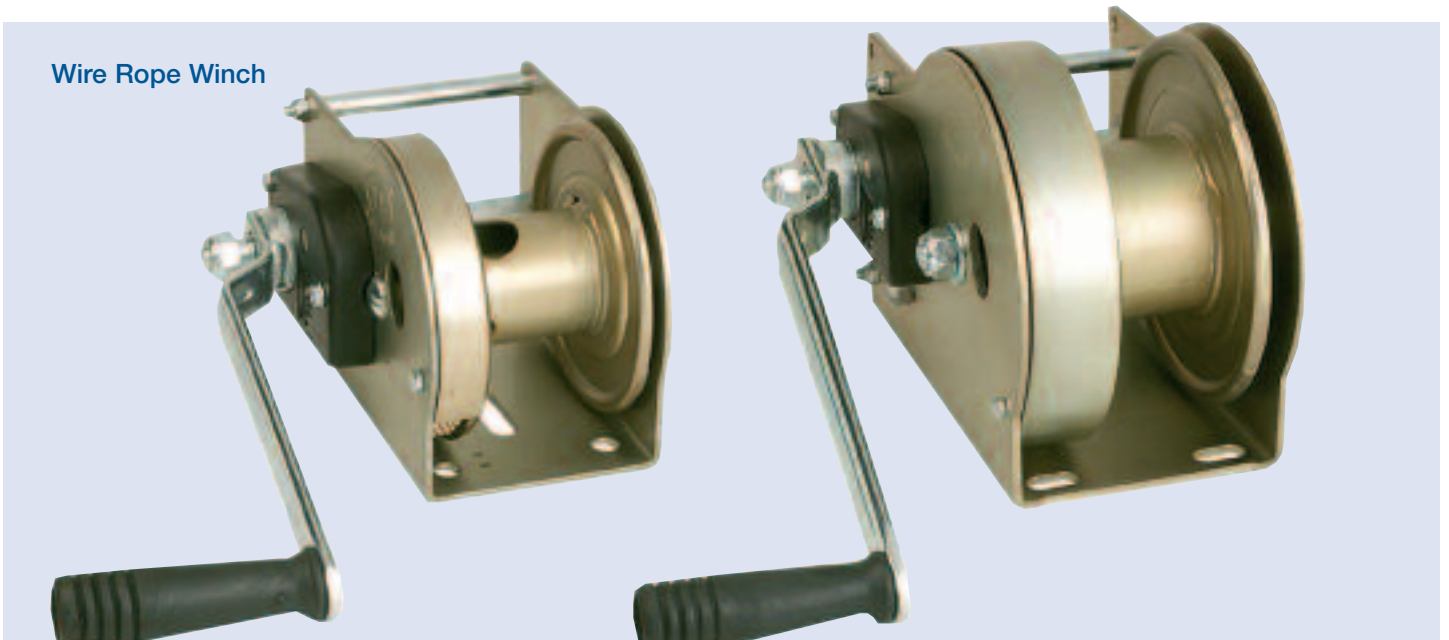
Specification - Wire Rope Winches

Winch type		4AFMD	4AFD	6AFD	8AFD	12AFD	20AFD	30AFD
Lifting capacity 1st layer	kg	190	340	500	650	900	1180	1994
Lifting capacity last layer	kg	80	190	240	270	490	650	1419
Rope diameter	mm	3	4	5	6	7	8	9
Rope capacity 1st layer	m	0.57	1.94	1.73	1.7	1.76	2.0	3.6
Rope capacity total	m	8	12	14	19	13	10	13
Drum diameter	mm	27	40	45	54	63	76	80
Number of rope layers		8	4	5	7	5	4	2
Gear ratio		2.57:1	2.57:1	3.5:1	4.85:1	9.71:1	9.71:1	21.85/1
Lift per crank turn (1st layer)	mm	37	54	45	39	23	25	13
Required effort	kg	15	24	24	23	25	19	24
Minimum load for brake function	kg	10	10	10	10	10	10	50
Rolling load capacity on a 30% incline	kg	350	500	750	850	1500	2500	3664
Number of winches per box		10	8	6	4	3	3	1
Weight	kg	2.2	2.7	3.7	5.5	7.4	7.8	13.7

Specification - Webbing Winches

Winch Type		4 AFDPS	6 AFDPS	8 AFDPS	12 AFDPS
Lifting capacity - 1st layer	kg	340	500	650	800
Lifting capacity - last layer	kg	120	200	250	300
Webbing size	mm	50	50	50	50
Drum diameter	mm	25	22	28	28

Wire Rope Winch





Electric Winch Type HD-EL

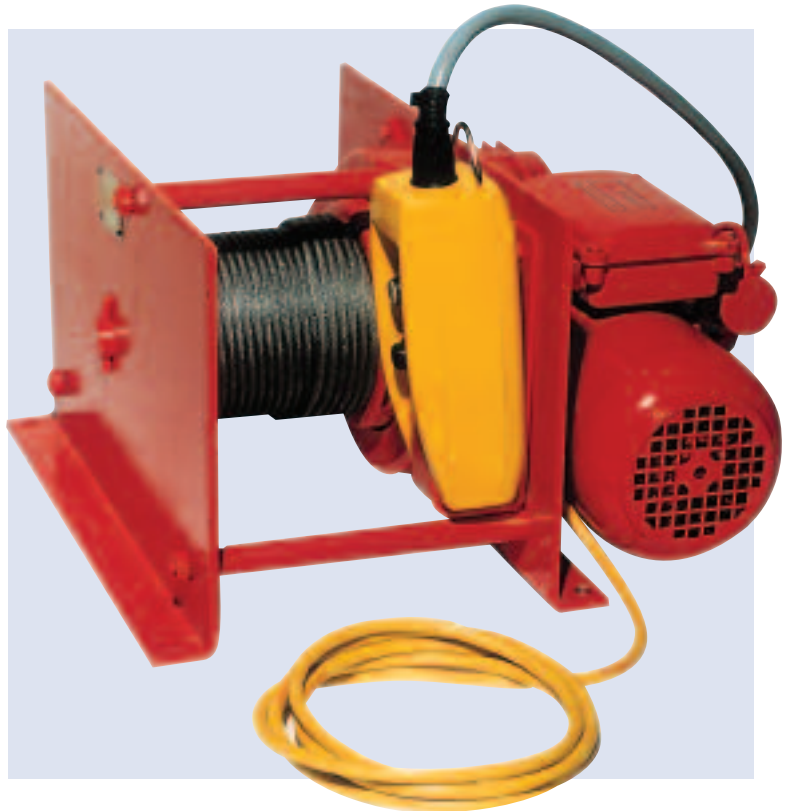


Lifting capacity 125 kg -2000 kg

- Compact and robust design
- Power supply 400V, 3 phase, 50Hz or 220V, 1phase, 50Hz
- Enclosure IP54 protection, Insulation class B
- Overload protection from 1000 kg and above

Options

- Low voltage controls
- Pendant or wall mounted control switch
- Grooved rope drum
- Travel limit switches
- Disengaging clutch
- Dual hoisting speeds



Specification - Electric Winch - 400v, 3ph, 50Hz

Lifting capacity 1st layer	kg	125	250	500	990	1000	2000
Lifting capacity last layer	kg	90	180	340	780	780	1560
Number of layers		4	4	4	3	3	3
Rope diameter	mm	4	4	6	8	8	11
Rope capacity 1st layer	mm	6.4	7.1	5.7	8.4	8.4	8.0
Rope capacity total	mm	32	35	30	30	30	30
Rope speed	m/min	11	7	4	6	6	6
Motor output	kw	0.37	0.37	0.37	1.3	1.3	2.6
Current	A	1.1	1.1	1.1	3.2	3.2	6.0
Duty class to DIN 15020		1Bm	1Bm	1Bm	1Bm	1Bm	1Bm
Weight	kg	25	35	38	80	80	150

Specification - Electric Winch - 220v, 1ph, 50Hz

Lifting capacity 1st layer	kg	125	125	250	250	500	500	990	1000	2000
Lifting capacity last layer	kg	90	90	180	180	340	340	780	780	1560
Number of layers		4	4	4	4	4	4	3	3	3
Rope diameter	mm	4	4	4	4	6	6	8	8	11
Rope capacity 1st layer	mm	6.4	6.4	7.1	7.1	5.7	5.7	8.4	8.4	8
Rope capacity total	mm	32	32	35	35	30	30	30	30	30
Rope speed	m/min	11	22	7	14	4	8	6	6	6
Motor output	kw	0.37	0.75	0.37	0.75	0.37	0.75	1.3	1.3	1.3
Current	A	4.0	5.2	4.0	5.2	4.0	5.2	9.1	9.1	9.1
Duty class to DIN 15020		1Bm	1Bm	1Bm	1Bm	1Bm	1Bm	1Bm	1Bm	1Bm
Weight	kg	27	25	37	35	40	38	88	88	150



Electric Winch

to BGV C1 German Safety Regulation



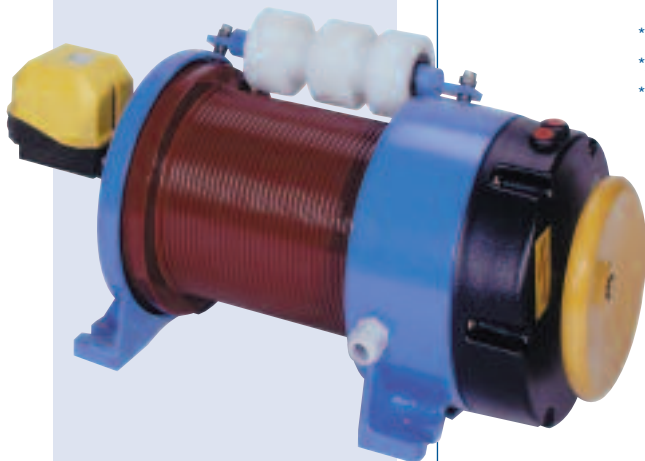
- Modern design
- Completely enclosed winches (IP 54), unaffected by environmental influences
- Compact, space-saving construction; brake-motor built into the drum; insulation to class F as standard, for ambient temperatures up to 60°C.
- Simple replacement of all wearing parts. Minimum lubrication requirement- only one lubrication point, oilbath lubricated planetary gear box
- Cable wound on one layer only
- Large drum diameter with milled rope grooves protects wire ropes from premature wear
- Multi rope operation possible
- Rope pressing roller
- Electronic overload protection the winch is instantly stopped on reaching the preset overload limit
- Brake release device for hand operation

Model	Lifting capacity (kg)	Speed (m/min)	Motor power (kw)/ duty cycle %	Motor speed (rpm)	Cable diameter (mm)	Lifting height (m)
WE1B-10/2	100	36.0 (*3)	0.75 / 40	3000	5	23.0
WE1B-10/4	160	18.0	0.55 / 40	1500	6	19.4
WE1B-10/6	160	12.0	0.37 / 40	1000	6	19.4
WE1B-10/8	160	9.0	0.27 / 40	750	6	19.4
WE1B-20/2	225	20.0	0.75 / 40	3000	6	19.4
WE1B-20/4	225	10.0	0.55 / 40	1500	6	19.4
WE1B-20/6	225	6.0	0.37 / 40	1000	6	19.4
WE1B-20/8	225	5.0	0.27 / 40	750	6	19.4
WE5B-20/4	230	34.0 (*3)	1.90 / 40	1500	6	29.2
WE5B-20/6	230	22.0	1.23 / 40	1000	6	29.2
WE5B-20/8	230	17.0	0.90 / 40	750	6	29.2
WE5B-60/4	230	8.0	0.66 / 40	1500	6	29.2
WE5B-60/6	230	5.5	0.44 / 40	1000	6	29.2
WE5B-10/4	450	18.0	19.0 / 40	1500	9	19.8
WE5B-10/6	450	12.0	12.3 / 40	1000	9	19.8
WE5B-10/8	450	9.0	0.90 / 40	750	9	19.8
WE5B-50/4	450	4.2	0.66 / 40	1500	9	19.8
WE5B-50/6	450	2.7	0.44 / 40	1000	9	19.8
WE10B-30/4	500	36.0 (*3)	3.90 / 40	1500	9	34.9
WE10B-20/4	645	27.0	3.90 / 40	1500	10	31.5
WE10B-20/6	645	18.0	2.50 / 40	1000	10	31.5
WE10B-20/8	645	13.5	1.80 / 40	750	10	31.5
WE10B-60/4	645	6.3	1.90 / 40	1500	10	31.5
WE10B-60/6	645	4.0	1.23 / 40	1000	10	31.5
WE10B-10/4	930	18.0	3.90 / 40	1500	12	25.2
WE10B-10/6	930	12.0	2.50 / 40	1000	12	25.2
WE10B-10/8	930	9.0	1.80 / 40	750	12	25.2
WE10B-50/4	930	4.5	1.90 / 40	1500	12	25.2
WE10B-50/6	930	3.0	1.23 / 40	1000	12	25.2
WE20B-20/4	1200	32.0 (*3)	8.00 / 40	1500	14	38.6
WE20B-20/6	1200	22.0	6.10 / 40	1000	14	38.6
WE20B-20/8	1200	16.0	4.30 / 40	750	14	38.6
WE20B-10/4	1600	21.0	8.00 / 40	1500	16	31.8
WE20B-10/6	1600	14.0	6.10 / 40	1000	16	31.8
WE20B-10/8	1600	10.5	4.30 / 40	750	16	31.8
WE20B-10/12	1600	7.0	2.90 / 40	500	16	31.8
WE20B-50/4	1600	4.5	1.90 / 40	1500	16	31.8
WE20B-50/6	1600	3.0	1.23 / 40	1000	16	31.8

*1 - 2 spare wraps have already been deducted from the cable reel-in information

*2 - The cable diameter relates to low-torsion cables with a steel inlay in accordance with DIN 3069

*3 - Recommendation: Version with frequency converter for speeds of 30 m/min or above





Pile Wind Winch

Manual or Battery Drill Operation

- 250 or 500kg manually operated or battery driven winches. Designed for multi-purpose theatrical applications
- Operation is achieved by simply applying a crank or battery drill to the main drive shaft with a 27mm hexagonal socket and drill to socket adaptor
- Contained within a protective steel cover, the pile wind winch has a drum capacity of 10 metres and up to five suspension cables. An integral, self-sustaining gearbox supports the load
- Rigid steel back plate with six fixing holes allows the winch to be mounted securely
- The winch size makes it possible to maintain 400mm cable centres. The wire ropes can enter the drum from above or below
- The winch has been designed to ensure that it can be totally stripped down into three manageable sections
- The design allows additional lines to be retro-fitted to the winch
- In the event of power failure, the load can be raised or lowered by hand using a separate, higher ratio drive shaft

Specifications

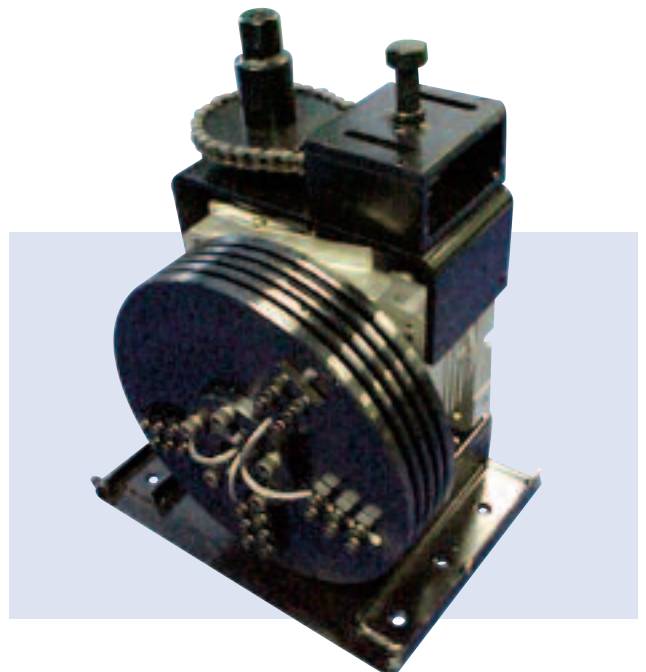
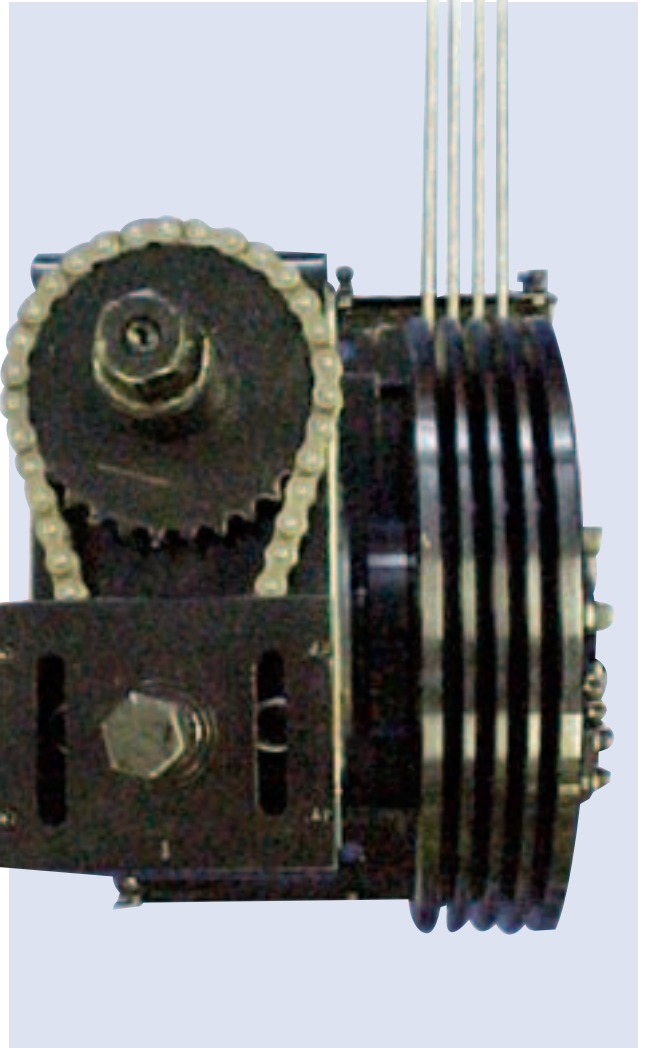
Lifting capacity	(kg)	250	500
Lifting height	(m)	10	10
Wire rope diameter	(mm)	5	6
Number of lines		up to 5	up to 5
Paint finish		Black	Black
Factor of safety		5:1	5:1
weight	(kg)	60	120

Safety

For the safe operation of the Pile Wind Winch, we recommend that an 18 volt battery drill is used (Makita or equivalent). To maintain the working efficiency of the drill, we recommend that only light loads of up to 75kg are raised and lowered by this method.

For higher loads, we recommend that a DeWalt DW-130 or equivalent electric drill be used.

Please Note: Drill, sockets/ adaptors are not supplied with the winch.





Pile Wind Winch

Electrically Operated



125kg, 250kg or 500kg lifting capacity

- Designed for multi-purpose theatrical and applications, black paint finish
- The Pile Wind Winch alleviates the strain of hand winding
- An integral self-sustaining gearbox supports the load with a safety factor of 5:1
- 'Fail-safe' integral motor brake
- A rigid steel back plate with six fixing holes allows the winch to be mounted securely
- The winch size makes it possible to maintain 400mm cable centres

- The housing allows for the wire ropes to enter the drum from above or below
- The Pile Wind Winch has been designed to ensure that it can be totally stripped down into three manageable sections
- The design allows for additional lines to be retro-fitted to the winch
- Each winch is supplied with wall mounted control panel, including push and hold buttons
- Ultimate gear travel limit switches are included



Specifications

Lifting capacity	(kg)	125	250	500
Lifting height	(m)	19	14.5	13
Number of lines		Up to 6	Up to 6	Up to 6
Wire rope diameter	(mm)	4	5	6
Lifting speed	(m/min)	15.5	16	18
Motor power	(kw)	0.75	1.85	4.0
Power supply		415V, 3Ph, 50Hz	415V, 3Ph, 50Hz	415V, 3Ph, 50Hz
Self weight - based on 4 line units	(kg)	81	122	159